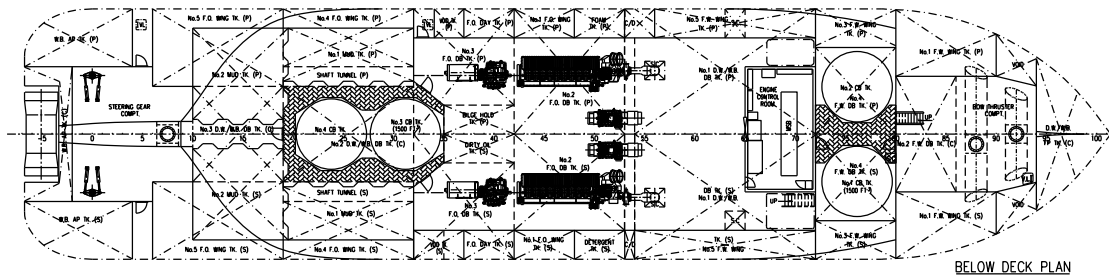
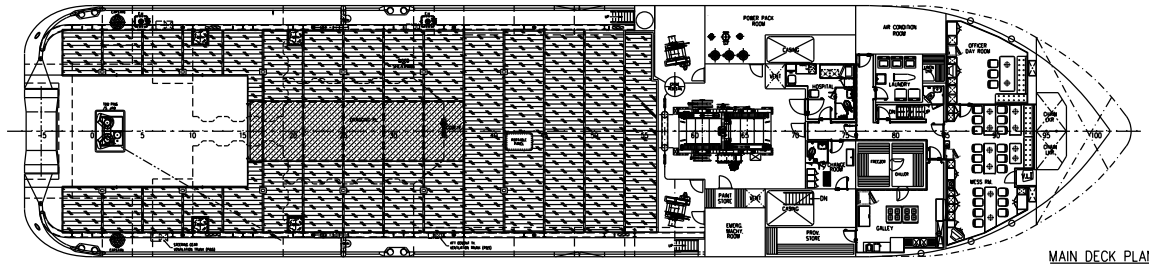
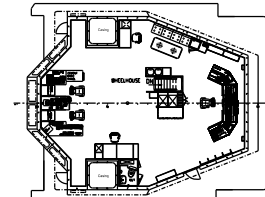
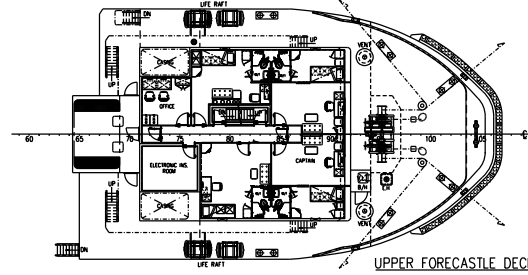
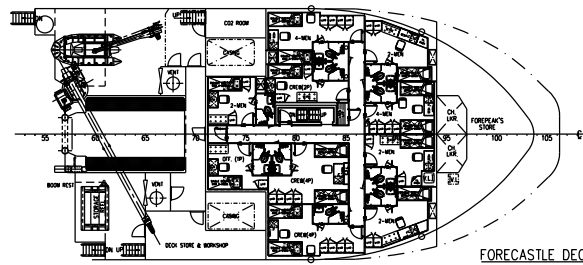


PRINCIPAL DIMENSIONS

LENGTH (O.A.)	67.800 M
LENGTH (W.L.)	64.746 M
LENGTH (B.P.)	60.750 M
BEAM (M.L.D.)	15.000 M
DEPTH (M.L.D.)	6.100 M
DESIGN DRAFT	5.000 M
DWT AT 5.0M	1650 TONS
FUEL OIL	600 M ³
FRESH WATER	580 M ³
DRILL WATER / W.B.	510 M ³
MUD	405 M ³
CLEAR DECK AREA	425 M ²
DECK CARGO (DECK LOADING = 7.5T/M ²)	600 TONS
DRY BULK TANKS (4x1500 FT ³)	170 M ³
MAIN PROPULSION ENGINE	2 X 2970 KW
SPEED (TRIALS)	14.0 KNOTS
BOLLARD PULL	100 TONS
COMPLEMENT	32 MEN

CLASS & NOTATION : ABS+A1 © Offshore Support Vessel, Towing Vessel,
Fire Fighting Vessel Class 1, +AMS, +ACCU, +DPS-2



2	AS PER BUILT	Supervise	26.06.09
1	UPDATED AS PER CONSTRUCTION DRAWING, ACCOMMODATION LAYOUT REMOVE SEA CHEST	Supervise	19.06.09
ITEM	DETAILS OF MODIFICATION	BY	DATE
CONSULTANT	 KHIAM CHUAN MARINE PTE LTD 15, HILLVIEW TERRACE, SINGAPORE 669226 TEL: 67753383 (6 LINES) FAX: 67753786 E-MAIL: khiamchuan@kcm.com.sg		
PROJECT	67.8m ANCHOR HANDLING SUPPLY VESSEL		
SHIP NAME	MERMAID VISION		
TITLE	GENERAL ARRANGEMENT		
CLASSIFICATION	HULL NO		T190
DRAWN	CHECKED	SCALE	DRAWING NUMBER
IntiLAI		1:150	KCM/0515(0)-G1
7-11-06			REV.

THIS DOCUMENT AND THE INFORMATION IT CONTAINS IS
COPYRIGHT AND REMAINS THE PROPERTY OF KHIAM
CHUAN MARINE PTE LTD. IT IS NOT TO BE COPIED
IN WHOLE OR IN PART OR DISCLOSED TO ANY THIRD
PARTY FOR ANY PURPOSE WHATSOEVER WITHOUT PRIOR
WRITTEN CONSENT.