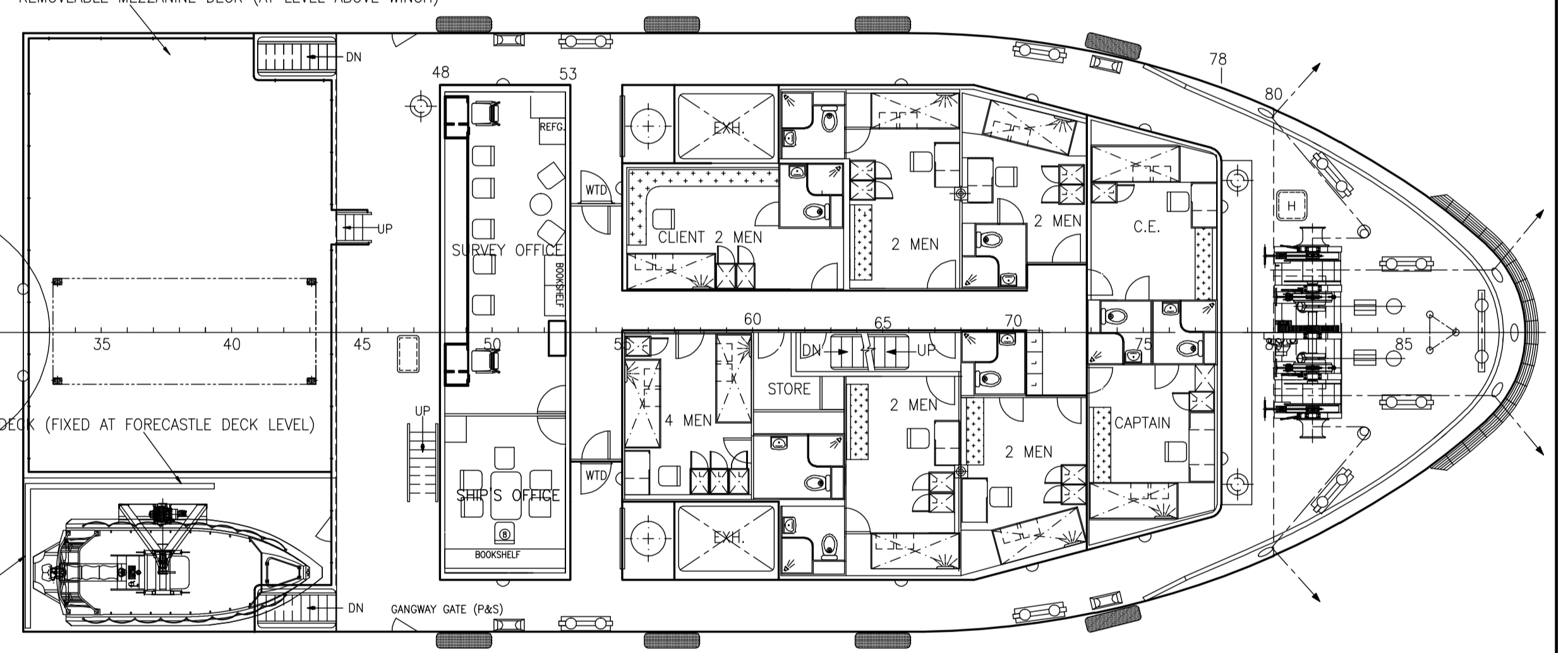
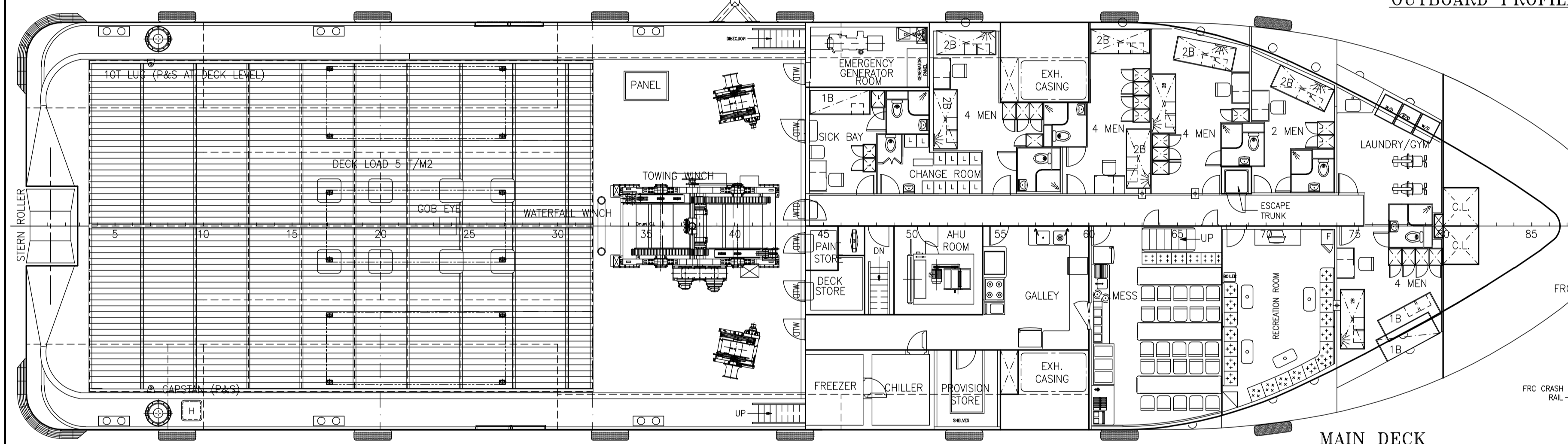


**PRINCIPAL PARTICULARS**

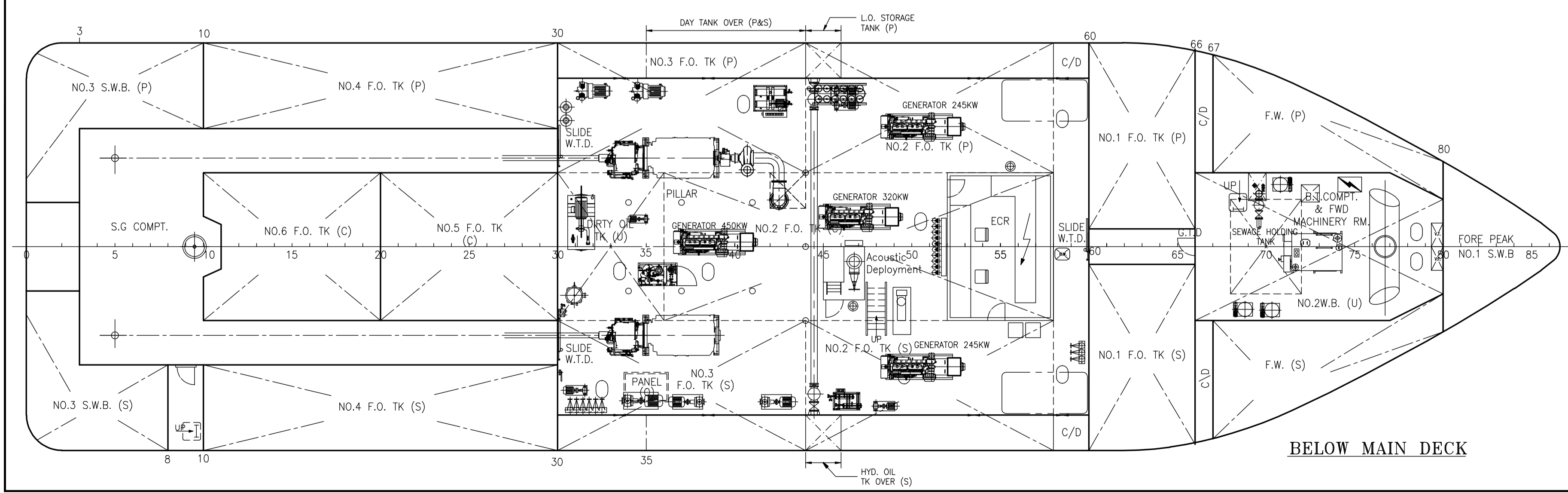
LENGTH O.A	53.80m
LENGTH W.L	51.50m
LENGTH B.P	48.50m
BEAM MLD.	13.80m
DEPTH MLD.	4.50m
DRAFT DESIGNED	3.00m
DRAFT MAX.	3.60m
COMPLEMENT	36 MEN(2x1, 7x2, 5x4)
F.W	92m <sup>3</sup> (approx.)
F.O	912m <sup>3</sup> (approx.)
S.W.B	133m <sup>3</sup> (approx.)
DECK AREA	260m <sup>2</sup> (approx.)

OUTBOARD PROFILE REMOVEABLE MEZZANINE DECK (AT LEVEL ABOVE WINCH)

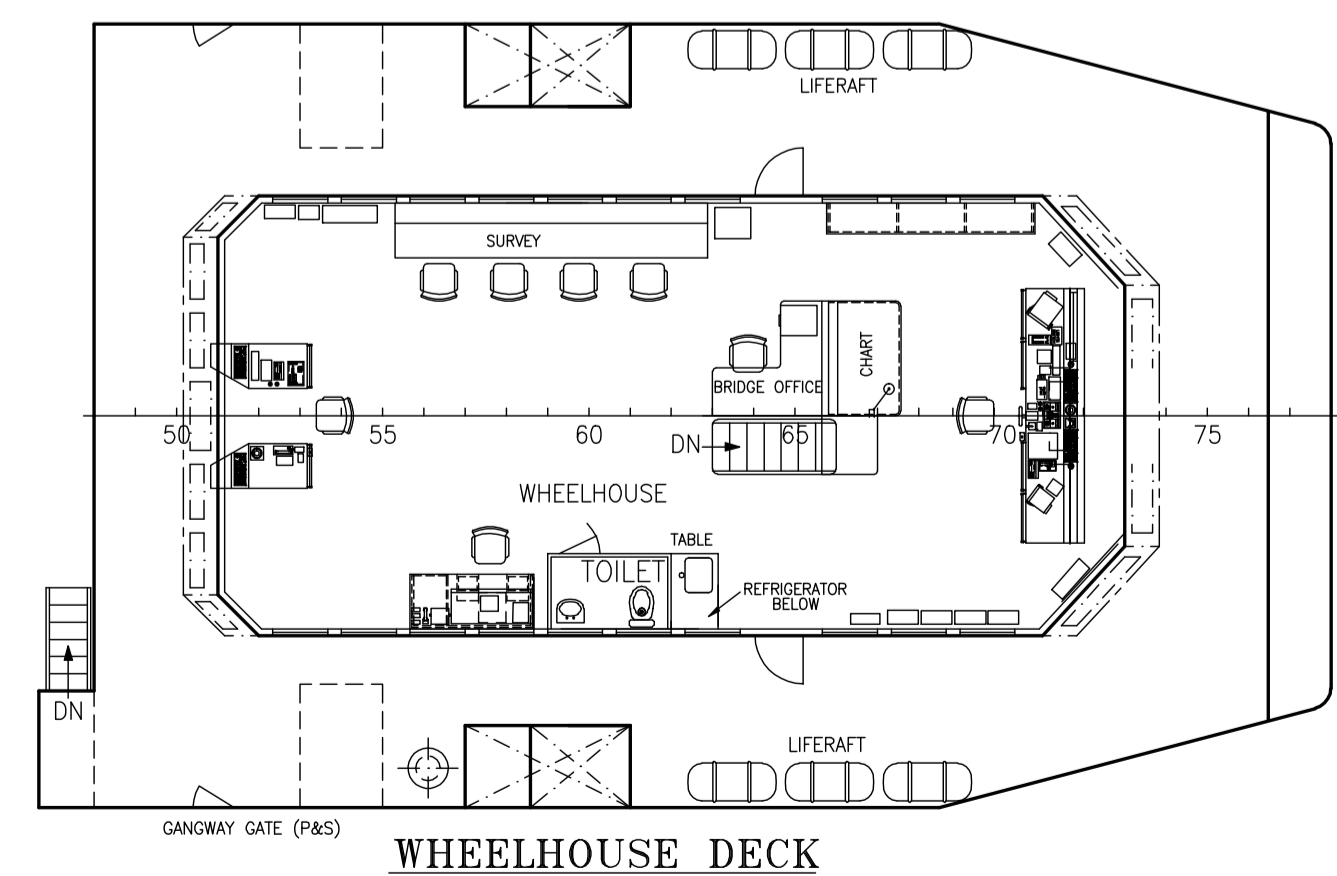


MAIN DECK

FORECASTLE DECK



BELOW MAIN DECK



WHEELHOUSE DECK

THIS DRAWING AND THE INFORMATION CONTAINED HEREIN ARE SUPPLIED ON THE UNDERSTANDING THAT THEY ARE THE EXCLUSIVE PROPERTY OF CONAN WU & ASSOCIATES. THEY MUST NOT BE USED OR REPRODUCED IN WHOLE OR IN PART WITHOUT PERMISSION IN WRITING.

DATE	MODIFICATION	REV	BY

**BUILDERS**  
**ESL EVERGROW SHIPBUILDING LIMITED**  
 ROOM 801/2, EAST COMMERCIAL BUILDING, 255-261 HENNESSY ROAD, WANGJIAJIANG DISTRICT, SHANGHAI, CHINA  
 TEL: (86) 21 3249 5502 FAX: (86) 21 3249 6025  
**GUANGZHOU PANYU LINGSHAN SHIPYARD**  
 2ND INDUSTRY DEVELOPING DISTRICT, LINGSHAN PANYU, GUANGZHOU, P.R. CHINA  
 EMAIL: lsahp@p21.com TEL: (8620) 9499 2618 FAX: (8620) 9499 0052

SHIP: **54m SURVEY/MULTI-PURPOSE VESSEL**

TITLE: **GENERAL ARRANGEMENT**

OWNER	MERMAID MARINE AUSTRALIA LTD	YARD NO.	
BUILDER	CHEOF LEE SHIPYARD LTD		LS147
CLASS	ABS+AT (E) OFFSHORE SUPPORT & MAINTENANCE ISL+AMS/IMS		

**CONAN WU & ASSOCIATES**  
 NAVAL ARCHITECTS  
 INFORMATICS BLDG., 5 INTERNATIONAL BUSINESS PARK, JURONG EAST, SINGAPORE 609914  
 TEL: (65) 562-1138 FAX: (65) 562-1238 (65) 562-0123 E-MAIL: cwestip@conanwu.com.sg

DRAWN	CHECKED	APPROVED	SCALE	DRAWING NO.	REV
xieshuangbo			1:100	C4273/G-1	As built

2008.11.18