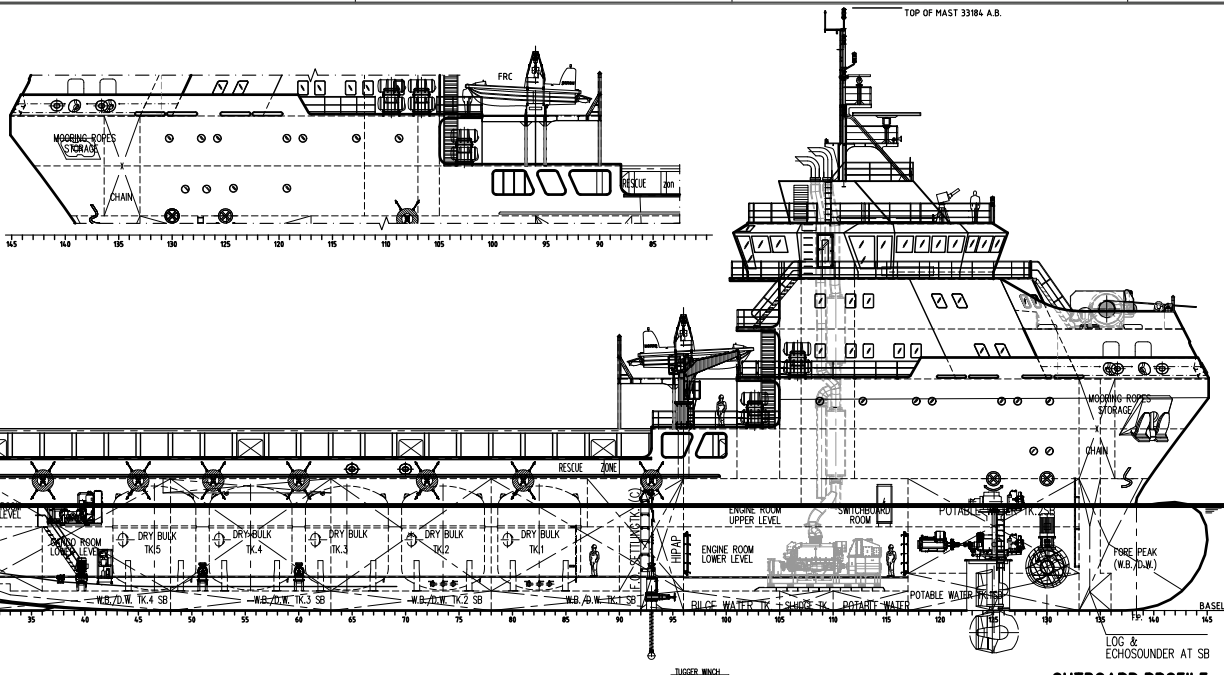
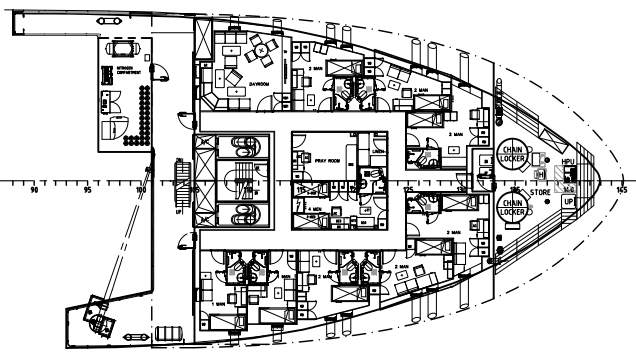
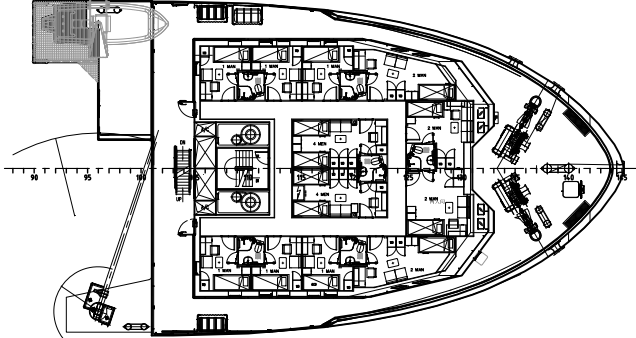
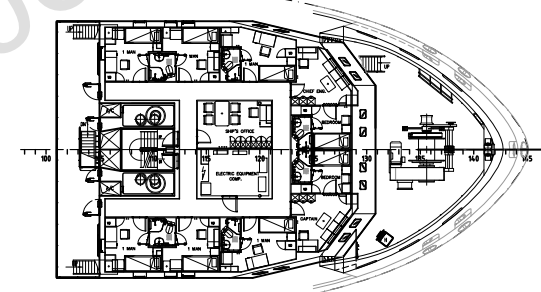
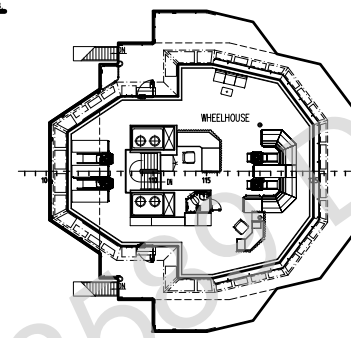
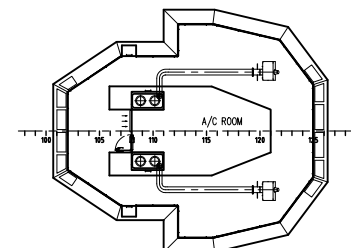
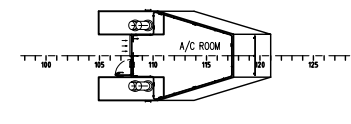


C-DECK 13000 AB.BL.
B-DECK 10200 AB.BL.
A-DECK 7400 AB.BL.



G-DECK 24100 A.B.
F-DECK 21700 A.B.
E-DECK 18600 A.B.
D-DECK 15800 A.B.
C-DECK 13000 A.B.
B-DECK 10200 A.B.
A-DECK 7400 A.B.
DESIGN DRAUGHT 5000 A.B.
TWEEN DECK 4300 A.B.
TANK TOP 1100/1500 A.B.

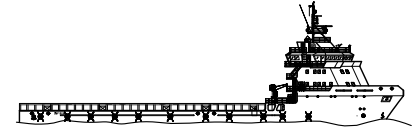


CABINS LIST			
TYPE OF CABINS	NO. OF CABINS	NUMBER OF BERTHS	PERSON
1 MAN WITH BEDROOM	2	2	Senior Officer
1 MAN Room	2	2	Officer
2 MEN Room	2	4	Petty Officer
1 MAN Room	6	6	Other Ratings
2 MEN Room	8	16	
4 MEN Room	3	12	No Crew
TOTAL	28	47	47

TANK CONTENT	m³	BARRELS	GALLONS	Cbft
LIQUID MUD	682.65			
DRY BULK	400.70			
W.B./D.W.	1832.23			
POTABLE WATER	1660.0			
FUEL OIL	1097.14			
METHANOL	429.40			

LENGTH OVER ALL	L _{OA}	87.07	m	286
LENGTH BETWEEN PERPENDICULARS	L _{BP}	83.00	m	271
BREADTH MOULDED	B	18.80	m	62
DEPTH TO MAIN DECK	D	7.40	m	24
DESIGN DRAUGHT	d	5.90	m	19
Max. SUMMER DRAUGHT		6.05	m	20
AIR DRAUGHT (design draught)		27.92	m	91
WORK DECK AREA		1000	m²	10764ft²
DEADWEIGHT DESIGN (5.9 m)	DWT	4849	MT	
DEADWEIGHT Max Summer draught (6.05 m)	DWT	5061	MT	

MAIN ENGINES	TYPE	
	NOMINAL OUTPUT	MCR obt 4X2548 HP obt 4X1900 kW
	NOMINAL SPEED	RPM 1800
	GENERATORS OUTPUT	MCR obt 4X2282 HP obt 4X1825 kW
SPEED	AT: DRAUGHT 5.0 m	14.3 [kn]
COMPLEMENT	TOTAL No. OF BERTHS	47+1
CLASS	AMERICAN BUREAU OF SHIPPING, +A1,(E), OFFSHORE SUPPORT VESSEL, +AMS, +0PS-2, +FFV CLASS 1	



REVIEWED
Details of this review
are as indicated in the
ABS letter



B	24/03/16	B.T.	ISSUED FOR APPROVAL - (ABS)
A	10/03/16	S.W.	ISSUED FOR APPROVAL - (ABS)
ISSUE	DATE	BY	REVISION
CLIENT:	MMA OFFSHORE	YARD NO.:	MW619-37
BUILDER:		CONTRACT:	
CLASS:	ABS		
PROJECT:	"MERMAID INSCRIPTION" - BAYU UNDAK PROJECT		
TITLE:	GENERAL ARRANGEMENT		
DRAWN:	CHECKED:	APPROVED:	SCALE:
S.W.	P.B.	J.M.	1:150
22/02/16	24/03/16	24/03/16	AO
DRAWING NO.:	15-1572-010		REV
			B



This drawing and all information shown herein are the exclusive property of INTERNATIONAL MARITIME CONSULTANTS PTY. LTD. A.C.N. 605 754 34 and is submitted only on a confidential basis. The recipient agrees not to reproduce the drawing, to return it upon request, and that no disclosure of the drawings or the information shown herein will be made to a third party without the prior written consent from I.M.C. This drawing has been produced under controls established by a DNVQ APPROVED QUALITY MANAGEMENT SYSTEM that conforms with ISO 9001:2000. The DNVQ certificate number is 120749.