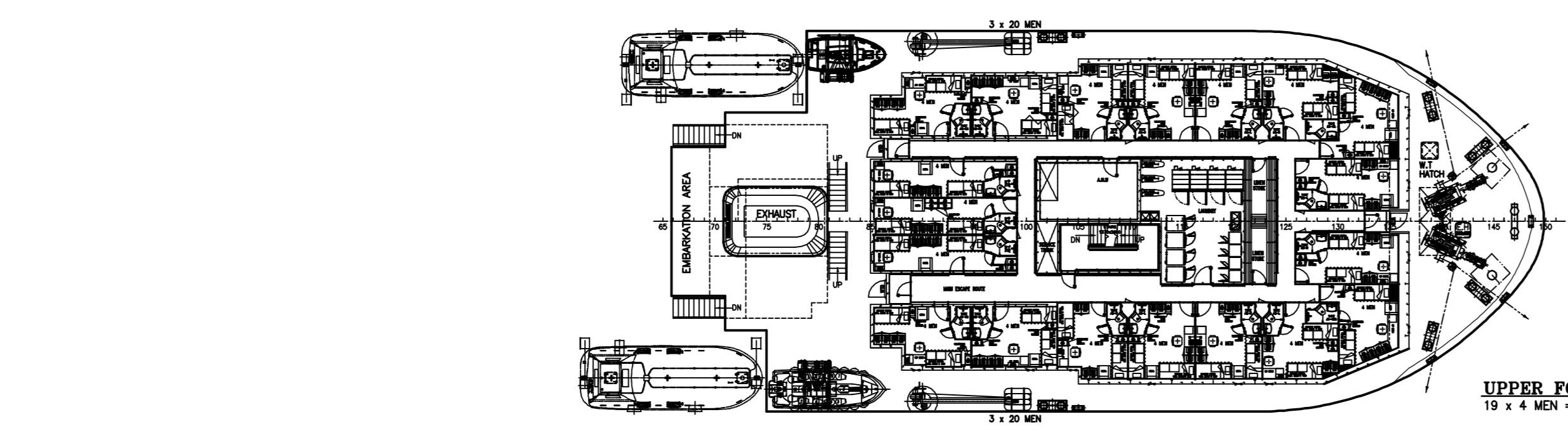
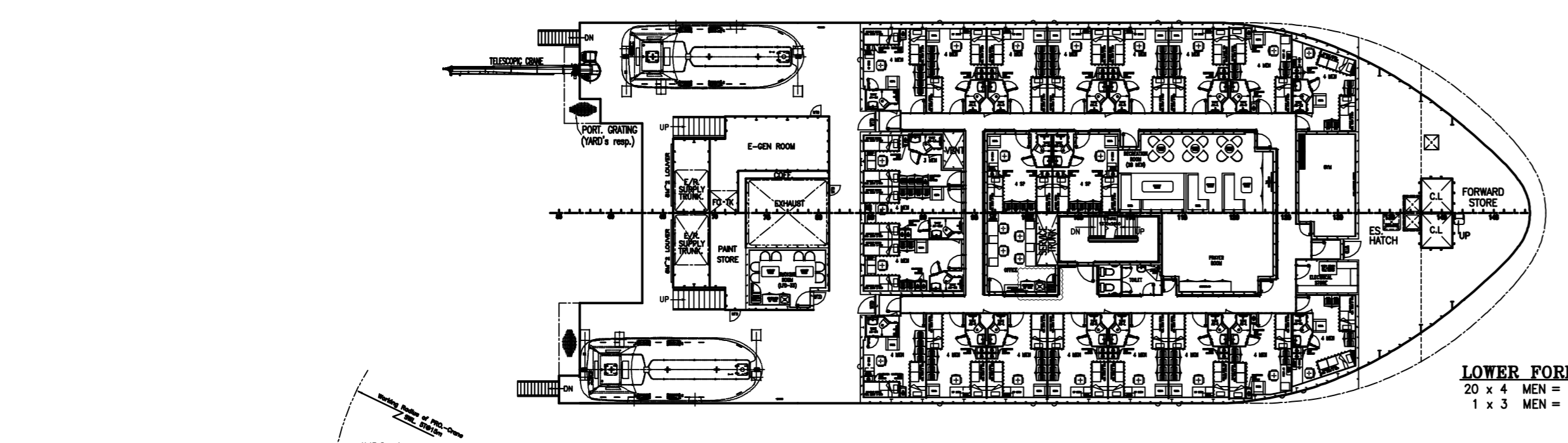


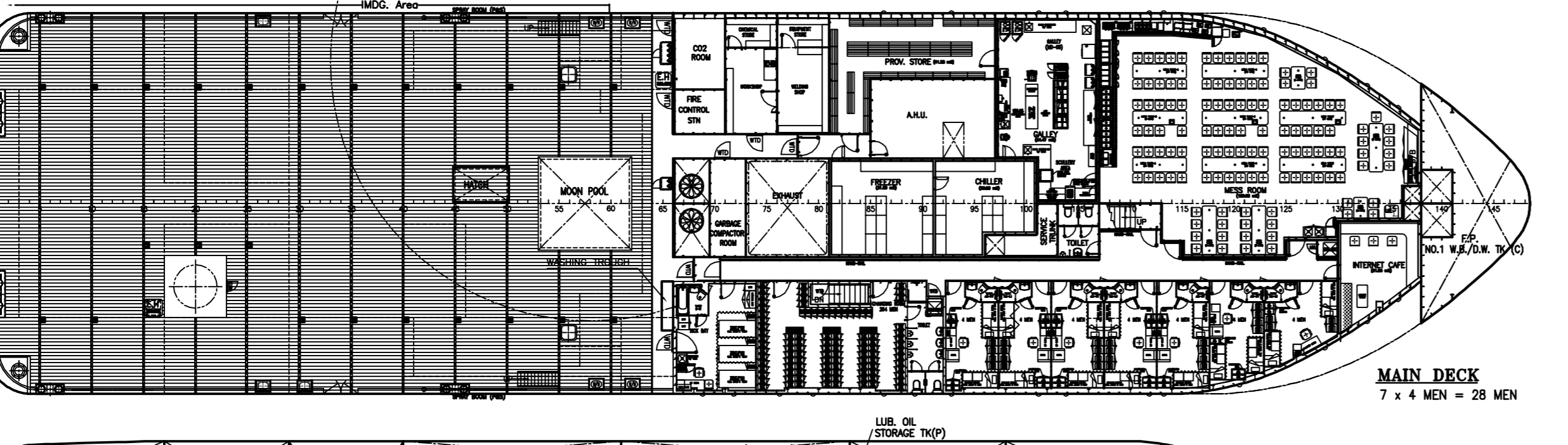
CAPTAIN'S DECK
 6 x 1 MEN = 6 MEN
 13 x 2 MEN = 26 MEN
 5 x 4 MEN = 20 MEN
TOTAL = 52 MEN



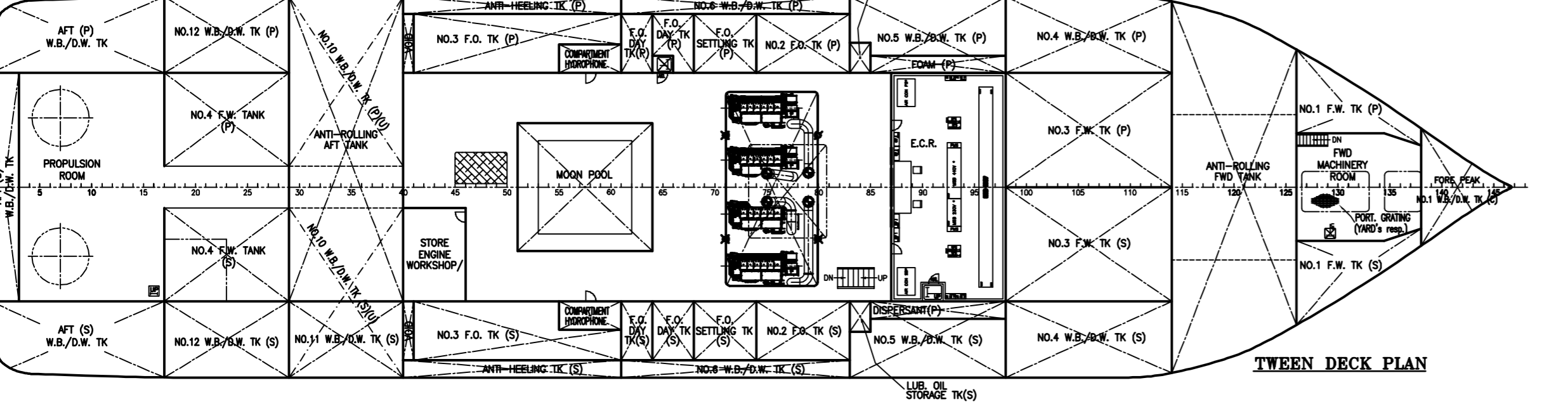
UPPER FORECASTLE DECK
 19 x 4 MEN = 76 MEN



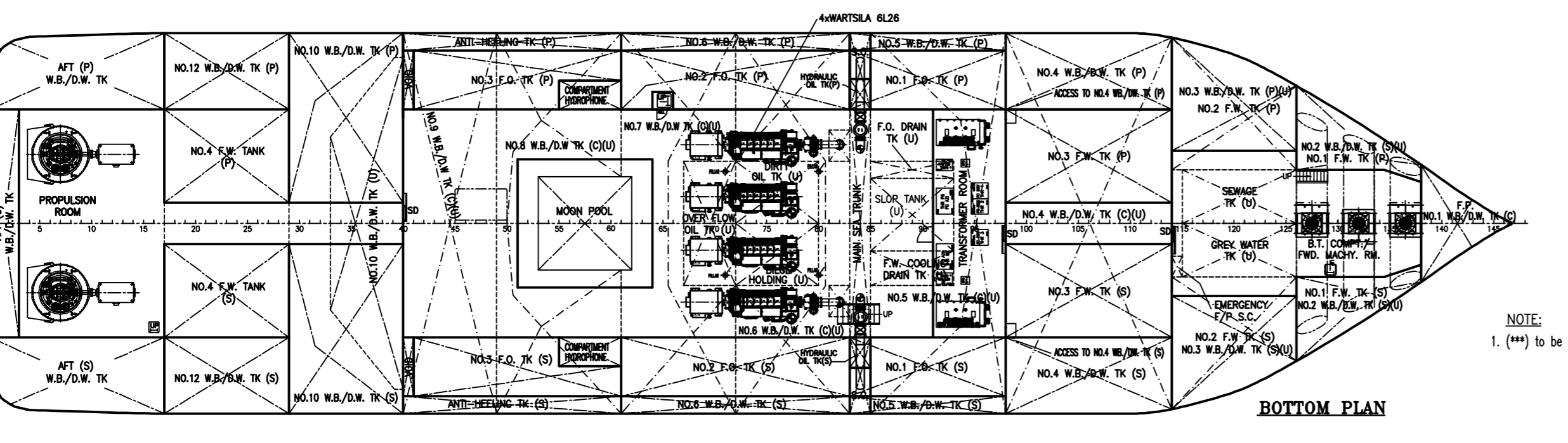
LOWER FORECASTLE DECK
 20 x 4 MEN = 80 MEN
 1 x 3 MEN = 3 MEN



MAIN DECK
 7 x 4 MEN = 28 MEN



TWEEN DECK PLAN



BOTTOM PLAN

PRINCIPLE PARTICULARS	
LENGTH OVERALL:	90.00 M.
LENGTH WATERLINE:	86.60 M.
BEAM MOULDED:	22.00 M.
DEPTH MOULDED:	8.00 M.
DRAFT DESIGNED:	5.50 M.
DRAFT MAXIMUM:	5.50 M.
COMPLEMENT:	239 MEN.
	(SPS: 205 MEN, CREW: 34 MEN.)
VESSEL NAME:	JAYA PRIVILEGE
FLAG STATE:	SINGAPORE
PORT OF REGISTRY:	SINGAPORE
IMO NO.:	-TBA-

ABS: * A1 (E), Offshore Support Vessel, (FFV-1, Supply), SPS, * AMS, * ACCU, * DPS-2, * SKP, MLC-ACCOM, CRC, UWILD.
 NOTE: VESSEL COMPLIED TO SPS-2008

90.0 M.		JAYA PROJECT NO.	REV.
MULTI PURPOSE MAINTENANCE WORK VESSEL		40493	G
GENERAL ARRANGEMENT		101-001	1/1
SCALE: 1:200		DATE: 08.08.18	SP1
FORMAT: A3		READY FOR TCF/ISO	REV.
WARTSILA Ship Design		14, ROBIN ROAD	
TEL: +65 4342 1138		FAX: +65 4342 1338	
www.wartsila.com			

NOTE:
 1. (***) to be kick plate to be installed on the WH-Deck below the lower rail course (Yard's resp.)